



WING SAFETY

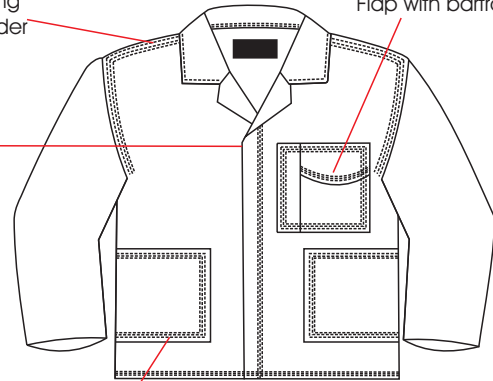
100 % Cotton DENIM CONTI SUIT



Triple needle stitching
armhole and shoulder
seams

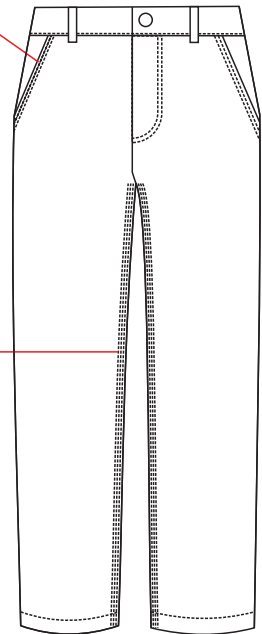
YKK Metal zip,
concealed

Chest pocket pen pocket &
Flap with bartacking



Pockets with bartacking

Bartacking at front pockets



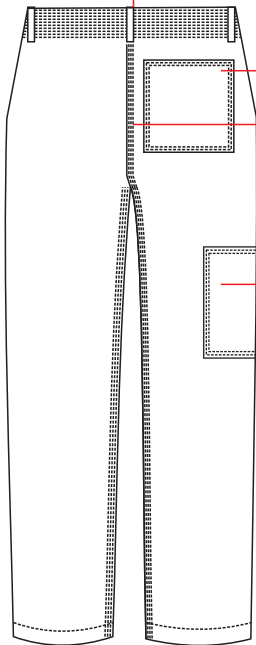
Triple needle stitched

Back waistband is elasticated.

Back patch pocket with bartacks.

Back rise triple needle stitched

Ruler Pocket



- Fabric : 100% Cotton -11/12 oz / +335 GSM
- Construction : Triple Stitch and Bar tacked
On all key stress points.

**100%
COTTON**



Triple Straight
Stitch - Centered